

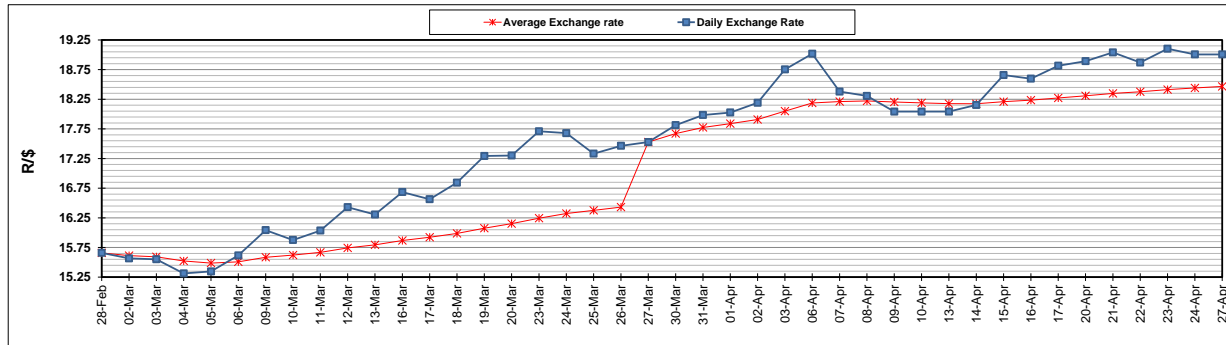
	PETROL 95 ULP	PETROL 93 ULP & LRP	DIESEL 0.05%	DIESEL 0.005%	ILL. PAR.
GAUTENG PUMP PRICE (SA c/l) AS FROM 01/04/2020	1,396.000	1,376.000	-	-	-
WHOLESALE PRICE (SA c/l) AS FROM 01/04/2020	-	-	1,269.560	1,273.960	672.828
SINGLE NATIONAL MAXIMUM RETAIL PRICE	-	-	-	-	840.000
BASIC FUEL PRICE - 27/04/2020 (SA c/l)	282.384	269.675	248.727	257.181	127.372
PRESS RELEASE CONTRIBUTION TO BFP 01/04/2020 - 27/04/2020 (SA c/l)	448.770	438.770	518.630	523.030	468.128
UNIT OVER/(UNDER) RECOVERY - 27/04/2020 (SA c/l)	166.386	169.095	269.903	265.849	340.756
AVERAGE BASIC FUEL PRICE 27/03/2020 - 27/04/2020	304.832	297.450	389.786	399.807	282.736
AVERAGE UNIT OVER/(UNDER) RECOVERY 27/03/2020 - 27/04/2020	173.829	169.574	151.344	145.860	212.392

### ANALYSIS MOVEMENT OF AVERAGE OVER/(UNDER) RECOVERY

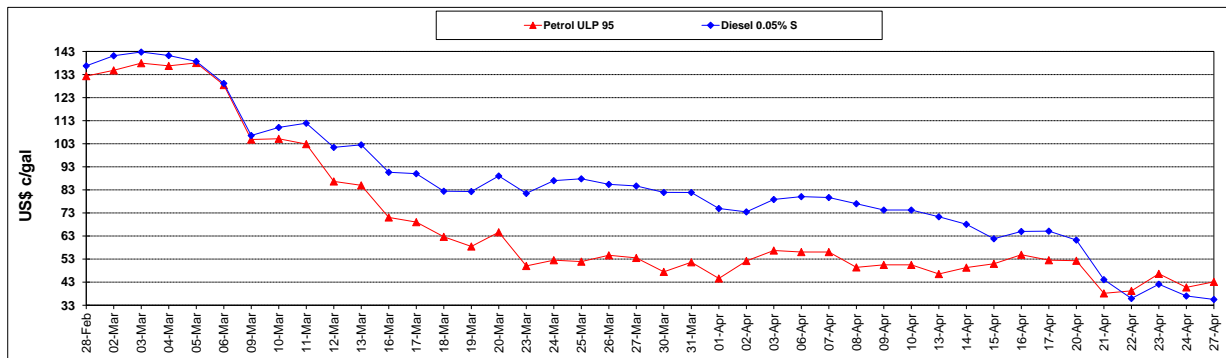
	PETROL 95	PETROL 93	DIESEL 0.05%	DIESEL 0.005%	ILL. PAR.
- MOVEMENT IN INTERNATIONAL PRODUCT PRICES	207.439	202.371	194.321	189.941	243.566
- MOVEMENT IN EXCHANGE RATE	(33.610)	(32.796)	(42.977)	(44.082)	(31.174)
AVERAGE UNIT OVER/(UNDER) RECOVERY 27/03/2020 - 27/04/2020	173.829	169.574	151.344	145.860	212.392

### R/\$ EXCHANGE RATE - (R/\$19.0064 - 27/04/2020)

#### EXCHANGE RATE USED IN BASIC FUEL PRICE



#### INTERNATIONAL PRODUCT PRICES OF BASKET USED IN BASIC FUEL PRICE



#### BASIC FUEL PRICE IN SA CENTS PER LITRE

